

CeeNee Players Firmware Update Instruction

Revision 1.0



Copyright © CeeNee, Inc., 2012. All Rights Reserved.

This document contains proprietary information belonging to CeeNee, Inc., and may be disclosed only as authorized in a license agreement controlling such use and disclosure.



TABLE OF CONTENTS

1. About this manual.....	2
2. Getting the latest firmware.....	3
2.1 Looking for the latest firmware.....	4
2.2 Checking the firmware version.....	5
2.3 Getting the correct firmware.....	6
2.4 Saving the firmware.....	7
3. Updating the new firmware.....	8
3.1 Procedure:.....	8
4. Revision History	12



1. About this manual

This is a quick manual that helps the user to update the firmware of the CeeNee eeTee HD Karaoke Media Player. All the steps in this quick manual are mandatory. Besides, the size of the firmware is large, and we need to ensure that the downloading process is not going to be interrupted by the quality of the internet that connected directly to the player. Therefore, we highly recommend the users to update the firmware through the USB storage method.



2. Getting the latest firmware

CeeNee always strives for excellences. We always want customers to have the best experiences with our devices. Therefore, we constantly improve our products by updating and releasing new hardware, firmware, and software. Users are recommended to go to our website to check out our latest announcements, promotions, and new firmware information.

2.1 Looking for the latest firmware

Go to www.ceenee.com. Move your mouse cursor to the SUPPORT tab and select Download Firmwares.

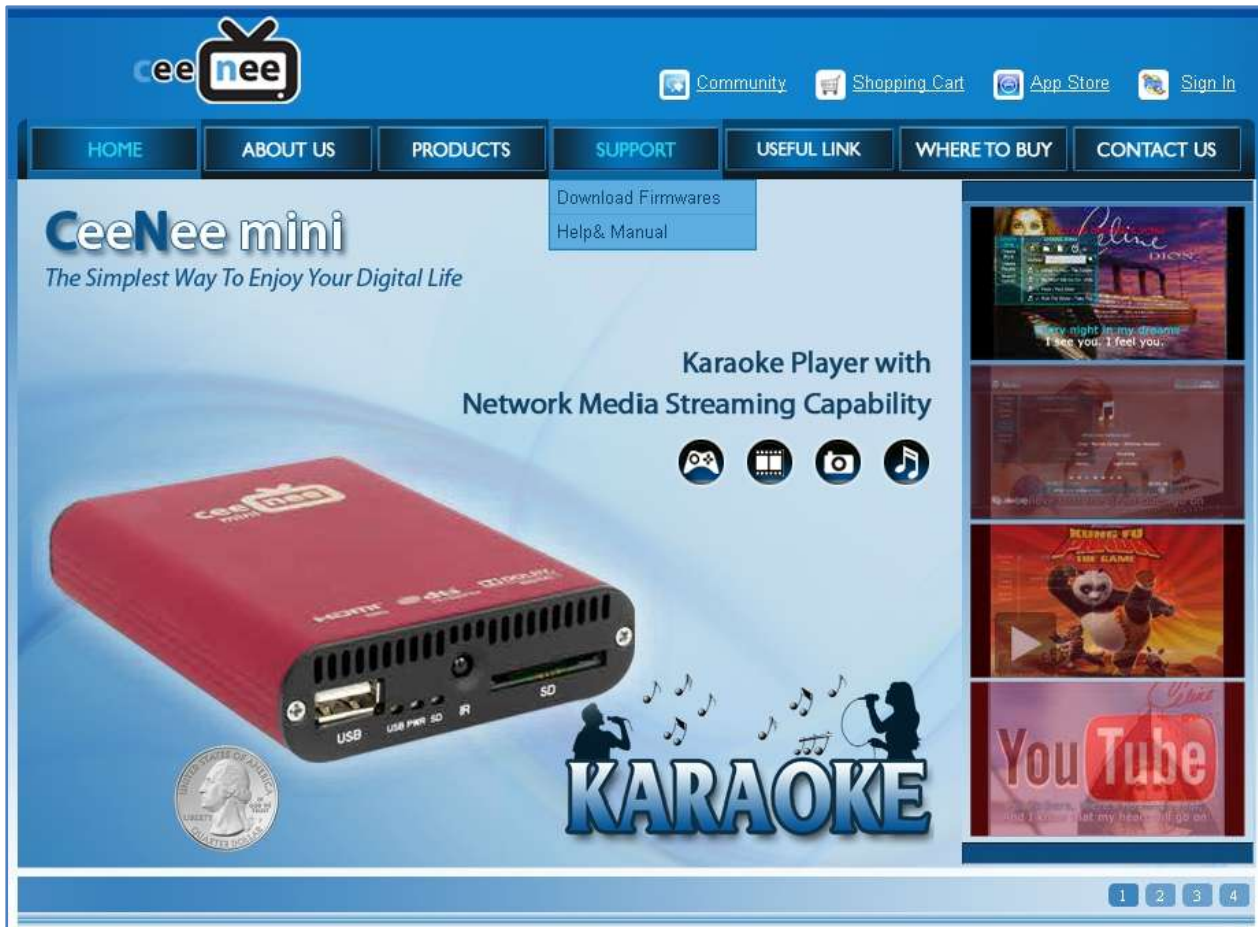


Figure 1: CeeNee Homepage and Firmware Support Page

2.2 Checking the firmware version

Before proceeding to the update process, users are recommended to check and make sure that the current firmware of the device is older than the firmware that we have on www.ceenee.com. Follow the following procedure to check the firmware version:

1. On the Home Screen, select the “Setting” tab and press the OK button on the remote control.
2. Select “System” and press OK.
3. Use the RIGHT ARROW button to go to “About” and press OK.

Figure 2 below shows the firmware version number.

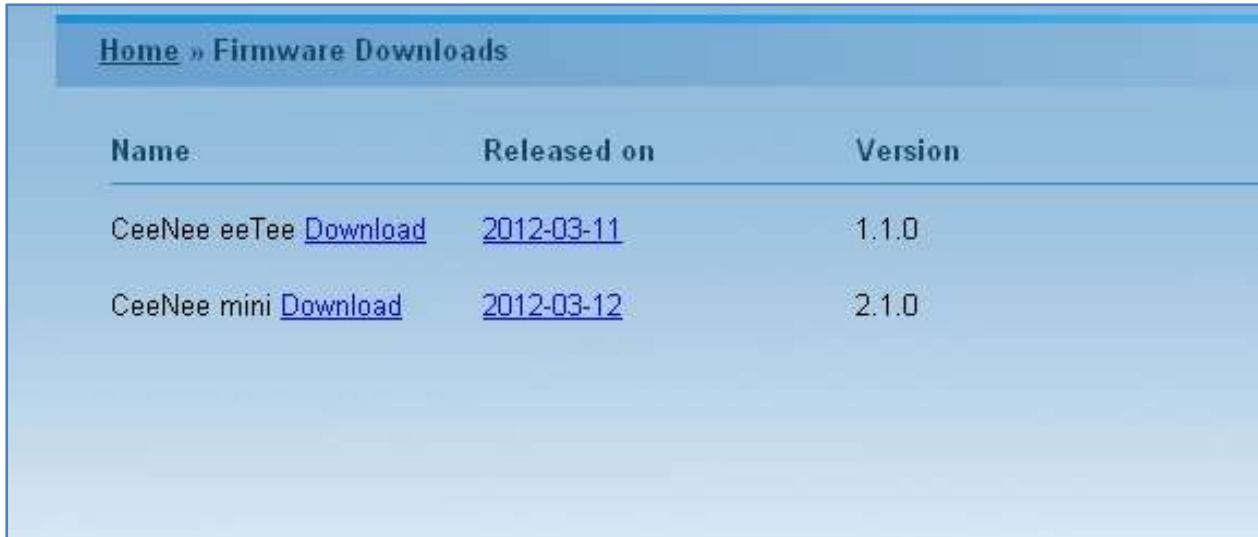


Figure 2: Firmware version information

If your firmware is older than the one we have on our website, please proceed to the next steps. Otherwise, yours is the most current version.

2.3 Getting the correct firmware

Look for the correct firmware and click Download

A screenshot of a web page titled "Home » Firmware Downloads". It contains a table with three columns: "Name", "Released on", and "Version". The table lists two firmware versions: "CeeNee eeTee" (version 1.1.0, released 2012-03-11) and "CeeNee mini" (version 2.1.0, released 2012-03-12). Each entry has a "Download" link next to its name.

Name	Released on	Version
CeeNee eeTee Download	2012-03-11	1.1.0
CeeNee mini Download	2012-03-12	2.1.0

Figure 3: Selecting the correct firmware

2.4 Saving the firmware

Insert a **blank** USB to the computer and save the firmware to that USB drive.

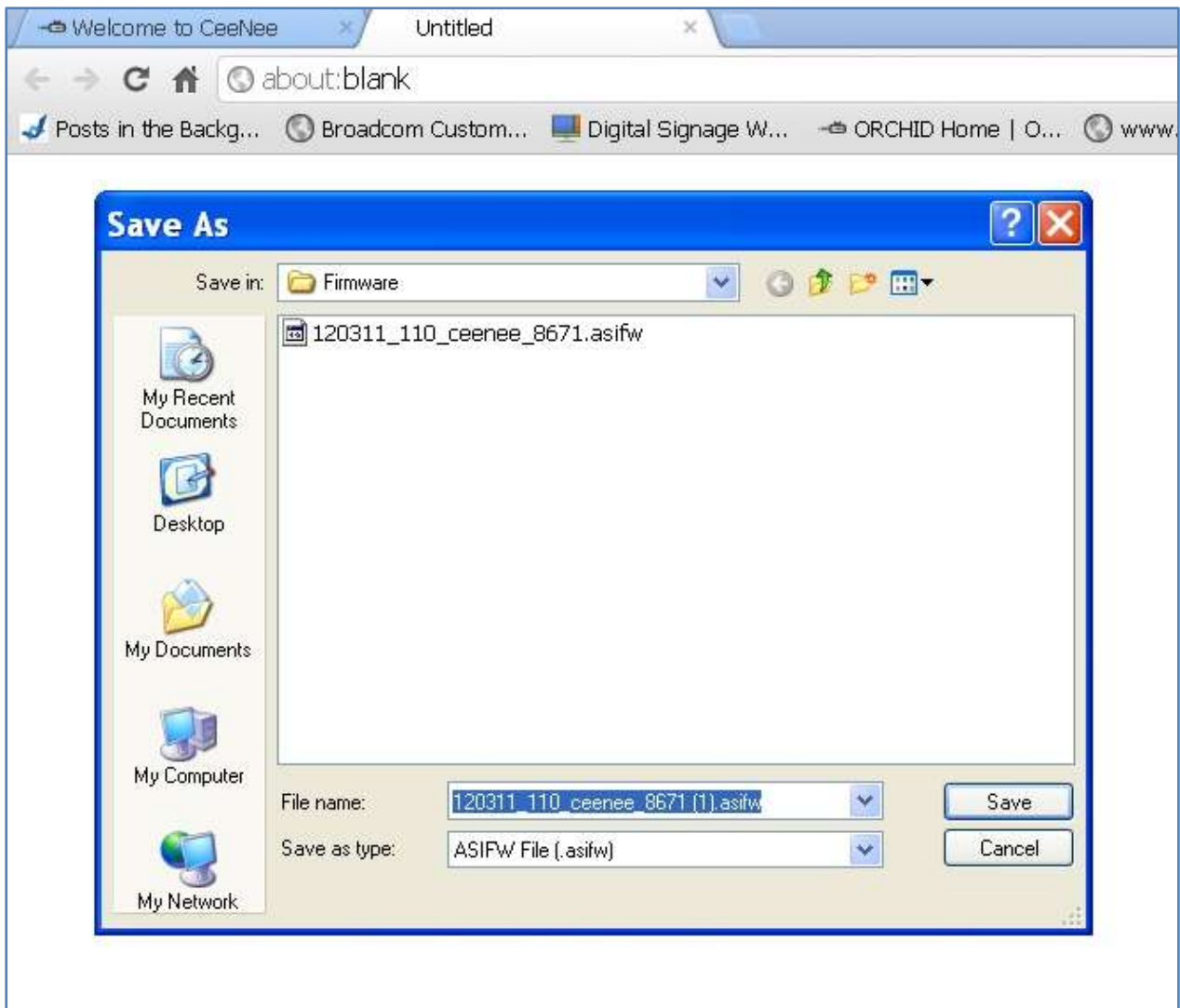


Figure 4: Saving the firmware to the USB

3. Updating the new firmware

The following sections provide detail instructions on how to update the new firmware. Please read and follow the procedure carefully. Wrong doing can cause the device malfunctioned and require a manufacturer restoration.

3.1 Procedure:

1. Insert the USB drive that has the new firmware into the player. It will take about 30 seconds for the device to detect the USB drive.
2. On the Home Screen, go to “Settings” and press OK.
3. Use the Down Arrow button to go to the “Systems” tab.
4. Use the Right Arrow button to go to the “Update firmware” tab.
5. Use the Down Arrow button to go to the “From storage device” and press the OK button. (See Figure 5)



Figure 5: Firmware location

- The player will then display all the external drives that being attached to it (see Figure 6.)



Figure 6: External storage that stores the new firmware

- Use the Left or Right Arrow key to highlight the drive that stores the new firmware and press the OK button on the remote.

8. Use the Left or Right Arrow key to highlight the correct firmware that you just downloaded and press the OK button.



Figure 7: Select the correct firmware

9. Press Ok again to start updating the new firmware.

During the firmware update process, please be patient and do not power off the device. It will take approximately 5 minutes. The screen also goes blank several times (see Figure 8 below.)

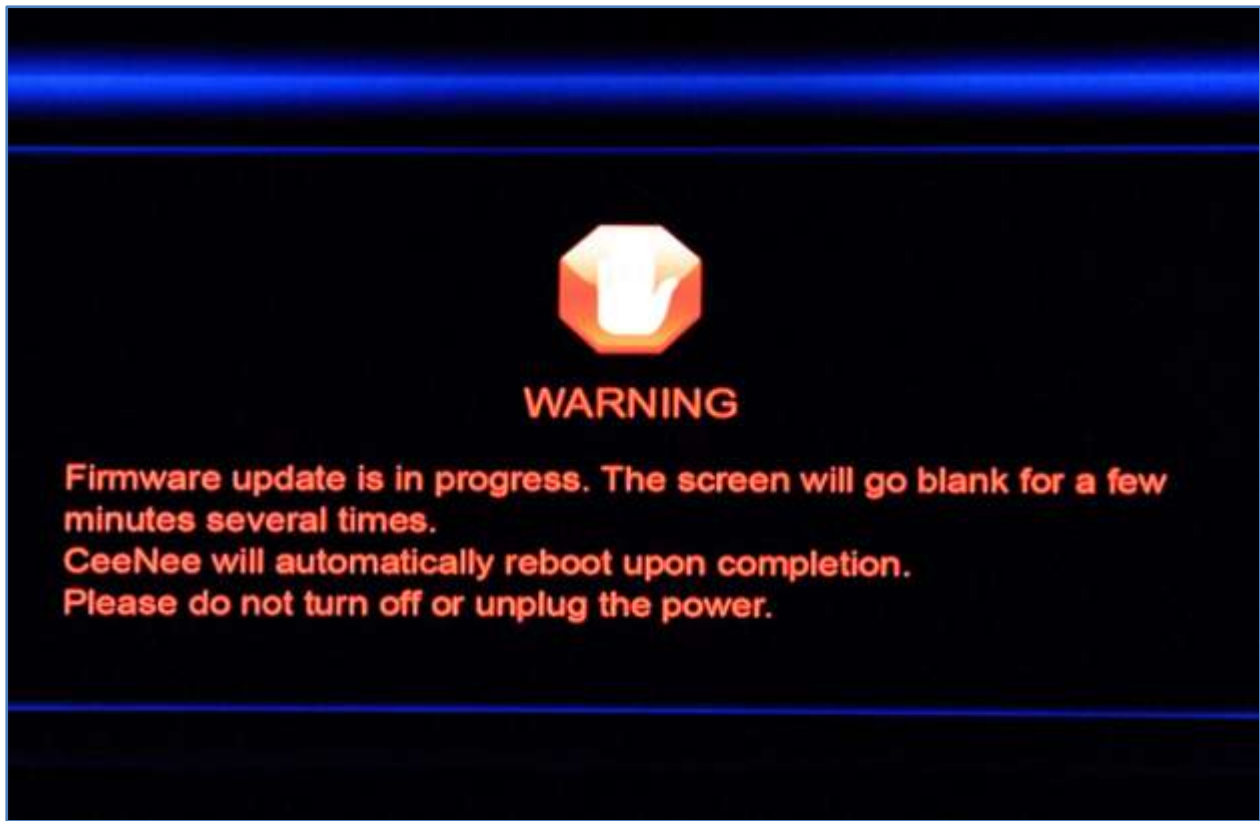


Figure 8: Updating

The player will reboot itself after it finished the update process. Please go back to the About screen to verify that you have the new version. Click this link [Checking the firmware version](#) for information how to check the firmware version.



4. Revision History

Prepared By	Revision Number	Date	Description
KV	1.0	April 12, 2012	First Release